

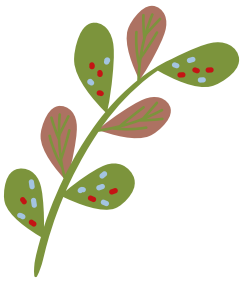


RED LILY HEALTH BOARD  
**NEWSLETTER**



The beautiful view from behind Injalak store over in Gunbalanya.

Red Lily acknowledges the traditional owners and custodians across the lands on which we live, work and we pay our respect to elders both past, present and emerging.



## Mother's day 2023

CLONTARF JABIRU COOKED A WONDERFUL HOT BREAKFAST OF BACON, EGGS AND TOAST TO CELEBRATE ALL MOTHERS, AUNTIES, SISTERS AND GRANDMAS WITHIN OUR LOCAL COMMUNITY.



### *Interesting fact:*

Mother's Day was first celebrated with gift giving in Australia in 1924.

Sydney woman Janet Heyden was inspired to collect charitable gifts for lonely, elderly mothers in hospital who had lost their husbands and/or children during World War 1.



# Community news & events!

## Community visits

Shirley, Indu and Hetal travelled with Mark to Minjilang and Warruwi to provide corporate updates to the Clinic managers and staff.

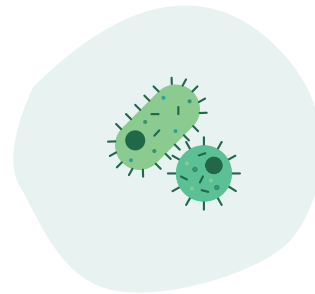


## Installation of the AED at Patonga homestead.

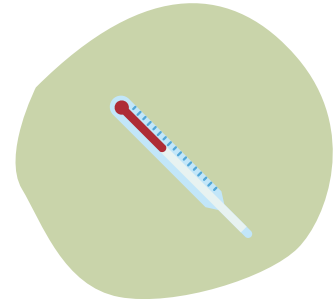
PICTURED: PADDY CAHILL, WITH THE AED WHICH WAS PLACED ON THE OUTSIDE OF THE ARTS CENTRE (OLD SCHOOL BUILDING), ABOUT 30 METRES FROM THE PUBLIC PHONE. AWESOME WORK TO ALL INVOLVED!



## Updates!



Call your local clinic to find out more information.



**Pictured:**

The Darwin Corporate staff after receiving their flu shots!

## Health updates!

**Health Alert:**  
**Increase in cases of Crusted Scabies**  
**Current situation**

There has been an increasing number of crusted scabies cases observed across the Northern Territory, with a 35% increase this year to date compared with recent years. The largest increase has occurred in Alice Springs and Darwin, while the East Arnhem region continues to have the highest rates in the NT

Further information and resources for crusted scabies is available at:  
<https://health.nt.gov.au/health-conditions-and-disease-information/scabies>



# Transition update

## **Management of outreach clinical services**

We are collaborating with NT Health to transition most Outreach resources at the same time as Jabiru Health Centre transition, mid next year.

## **Medical services for Warruwi, Jabiru and Gunbalanya**

Red Lily has an interim arrangement with NT Health for the Minjilang doctor (Dr Brad Martin) and continue discussions with NT Health regarding Doctors for Warruwi, Jabiru and Gunbalanya.


Both ACCHS's and government have many difficulties in recruitment of doctors all around Australia but particularly in remote service provision.

## **Jabiru Health Centre**

NT Government have advised that there are further delays with the new Health Centre building completion and should be completed early to mid-2024. Transition will take place following that in mid-2024, following a period of 'bedding in' of the building. There are further discussions taking place, so this plan may change in the coming months.

## **Gunbalanya Health Centre**

The new building development has been enhanced by an NTG announcement that \$20 million will be allocated for the building. Allocation of the funding has been announced in the NTG budget. This will then allow Red Lily to plan for a date to transition the services based at Gunbalanya. This is a long-awaited allocation of funds and is welcomed by all residents of the area and all stakeholders.



## Do you have questions or want more information?

Contact Red Lily Health Board at [info@redlily.org.au](mailto:info@redlily.org.au)

If you would like to get the latest information about Red Lily Health, please visit our website or follow us on Facebook, LinkedIn & Instagram

### Social media pages!



Website: <https://redlily.org.au/>



Facebook: [www.facebook.com/redlilyhealth](https://www.facebook.com/redlilyhealth)



LinkedIn: [www.linkedin.com/company/31371580](https://www.linkedin.com/company/31371580)



Instagram: <https://www.instagram.com/redlilyhealth>

**Acknowledgement:** Red Lily Health is funded by NT Health, Australian Government Department of Health, NT Primary Health Network (NT PHN) & Kakadu West Arnhem Social Trust (KWAST). Red Lily Health is supported by Aboriginal Medical Services Alliance NT (AMSANT) & Top End Health Service (NT Government)



The Red Lily Health Board Aboriginal Corporation (RLHB) was formed in 2011 to empower Aboriginal people of the West Arnhem region to address the health issues they face through providing leadership and governance in the development of quality, effective primary health care services, with a long-term vision of establishing a regional Aboriginal Community Controlled Health Service.